

Appendix 7G

INDICATIVE BREEDING TERRITORY MAPPING

Appendix 7G: Indicative breeding territory mapping for target species

List of Figures

Figure 7G.1: Indicative territories for breeding waders	221
Figure 7G.2: Raptor survey records for breeding season 2022	222
Figure 7G.3: Raptor survey records for breeding season 2023	223
Figure 7G.4: Indicative breeding territories for buzzard and kestrel within the 2 km turbine buffer	224
Figure 7G.5: Peregrine nests identified within the 2 km turbine buffer	225

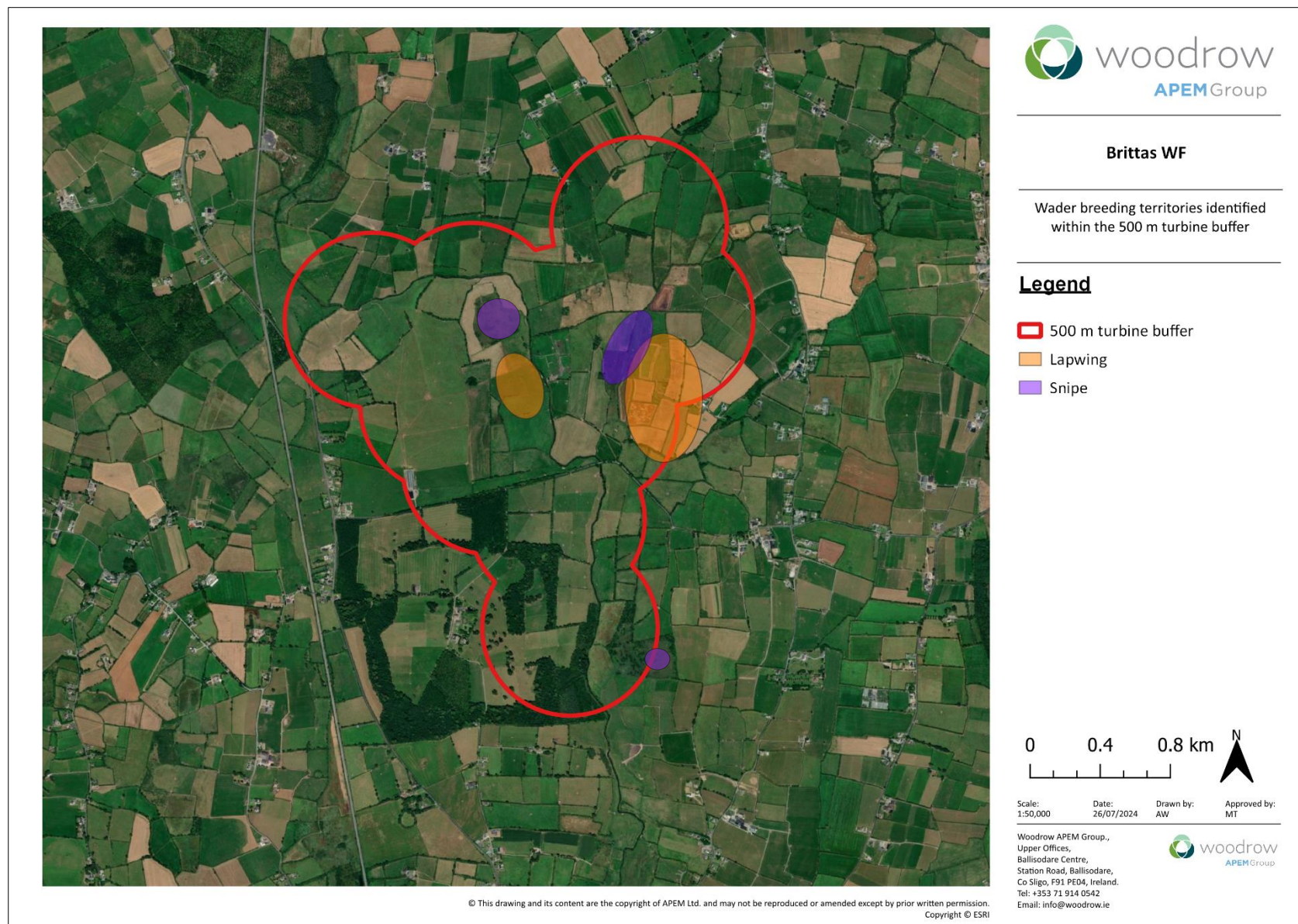


Figure 7G.1: Indicative territories for breeding waders

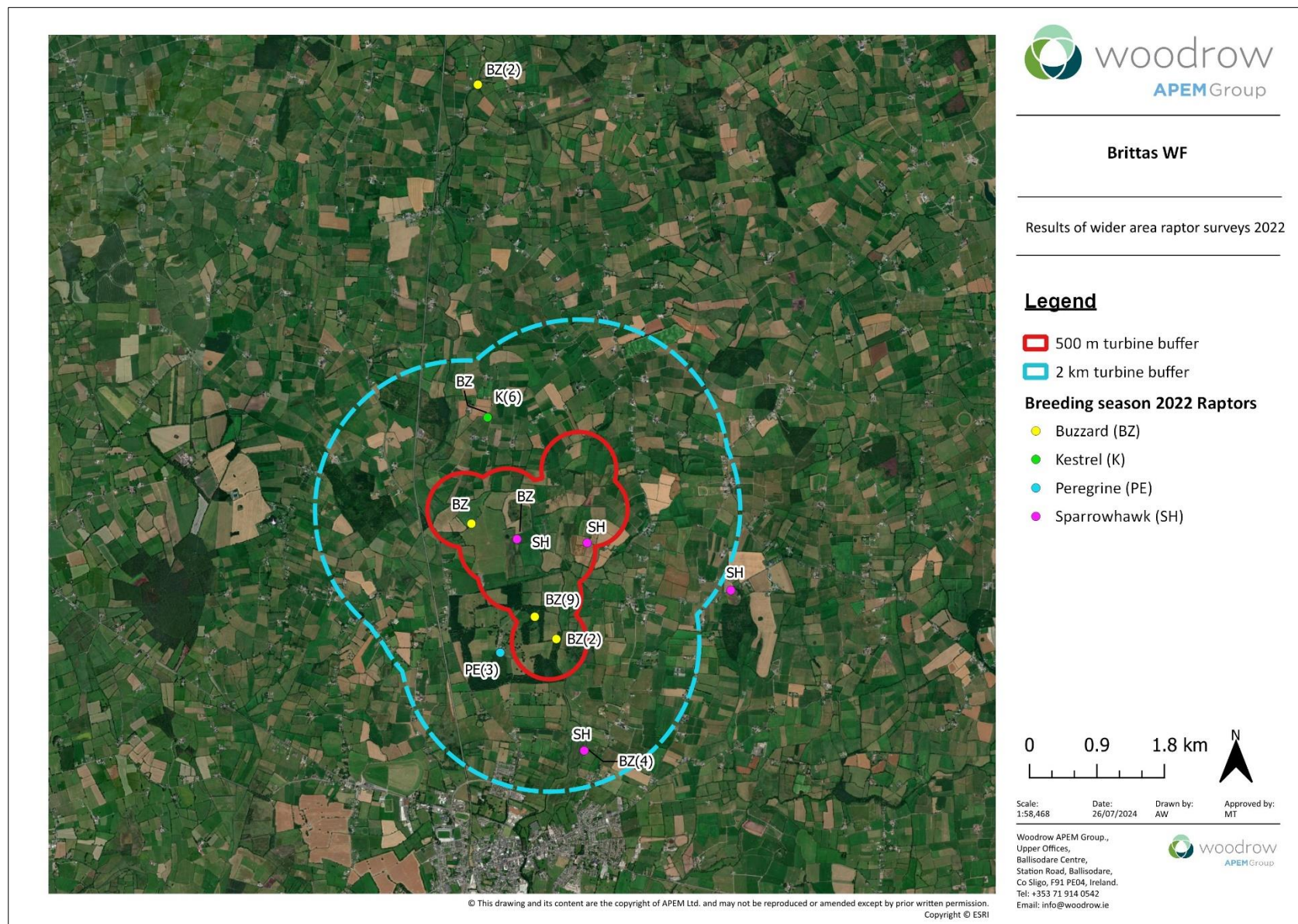


Figure 7G.2: Raptor survey records for breeding season 2022

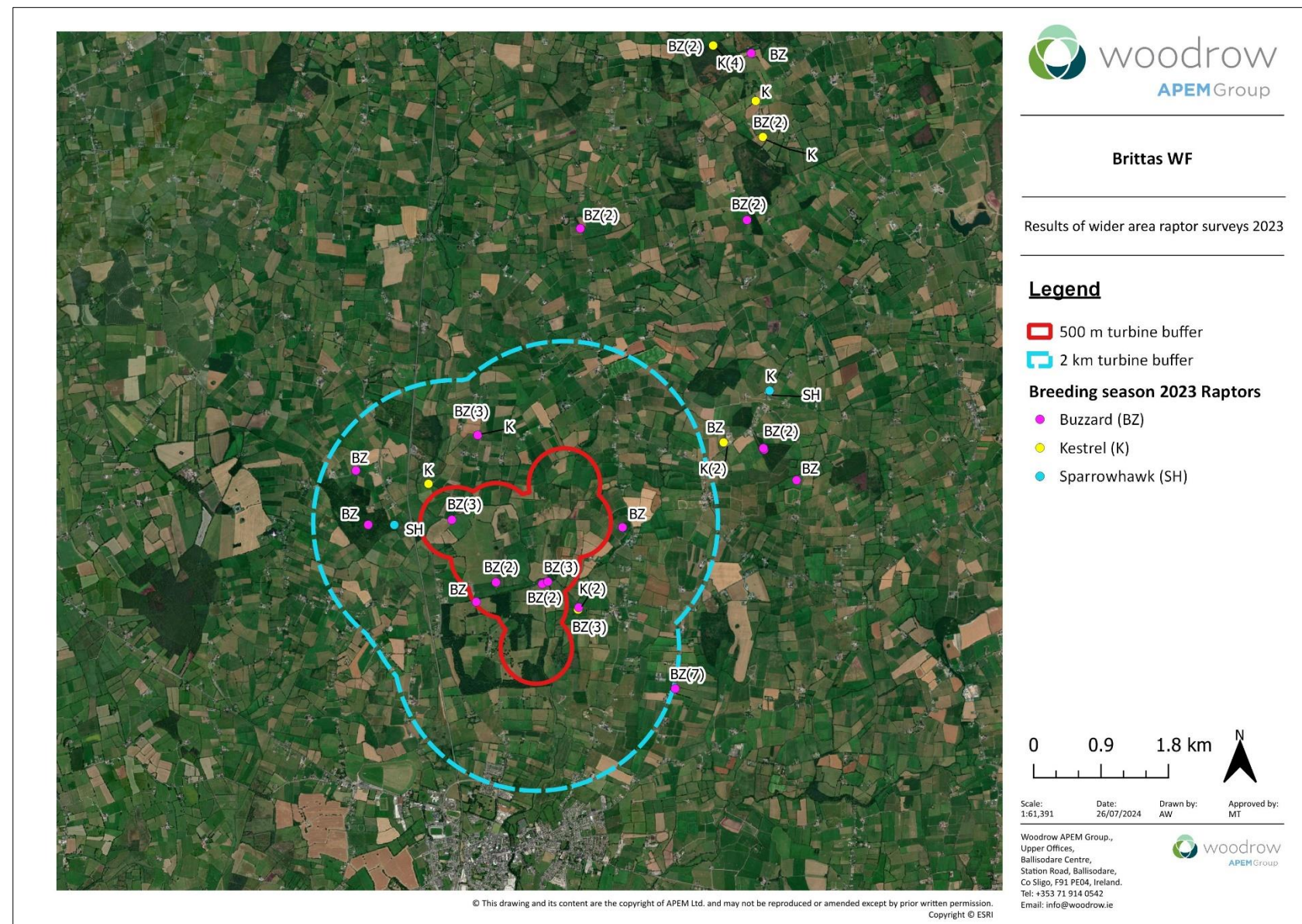


Figure 7G.3: Raptor survey records for breeding season 2023

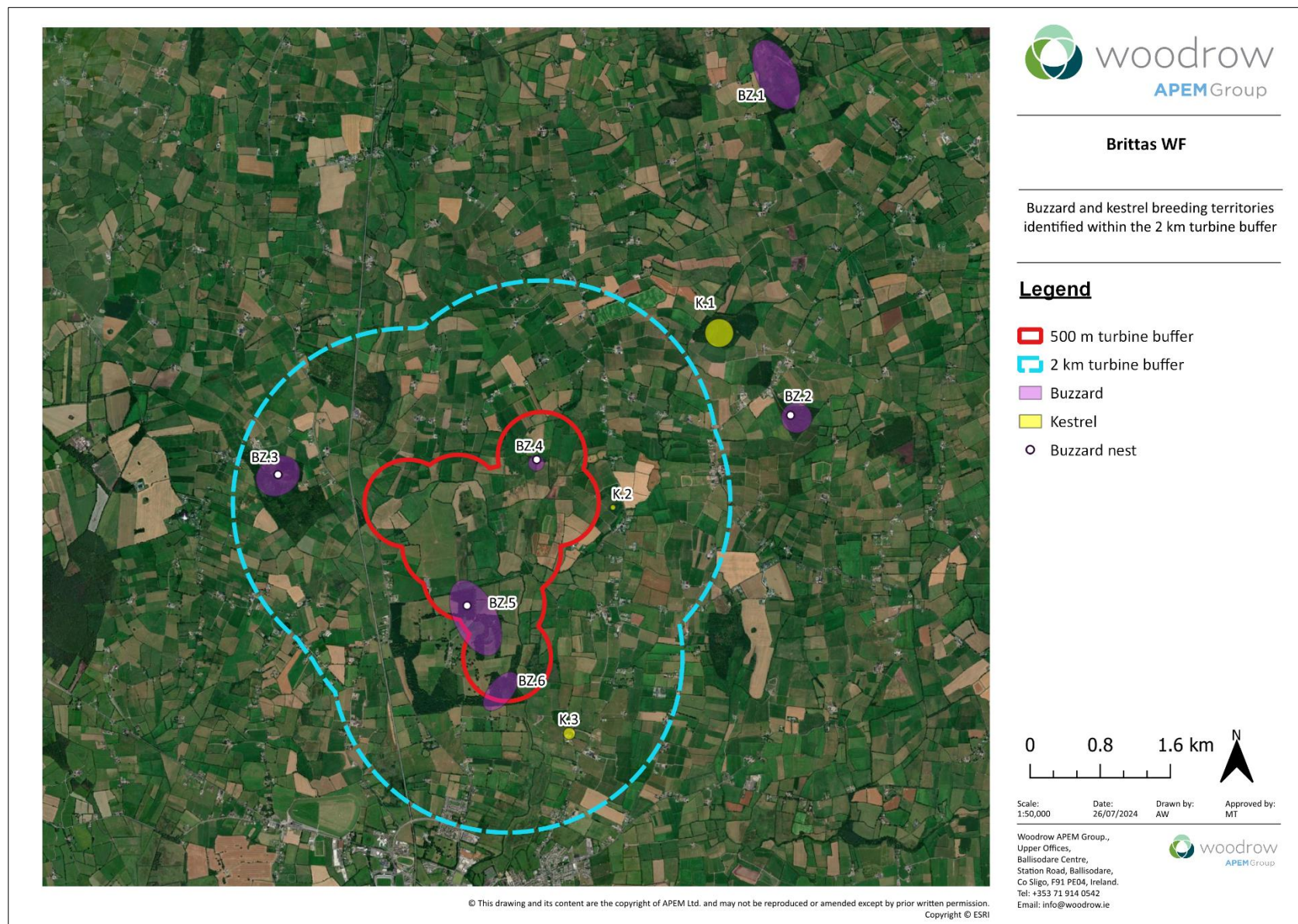


Figure 7G.4: Indicative breeding territories for buzzard and kestrel within the 2 km turbine buffer

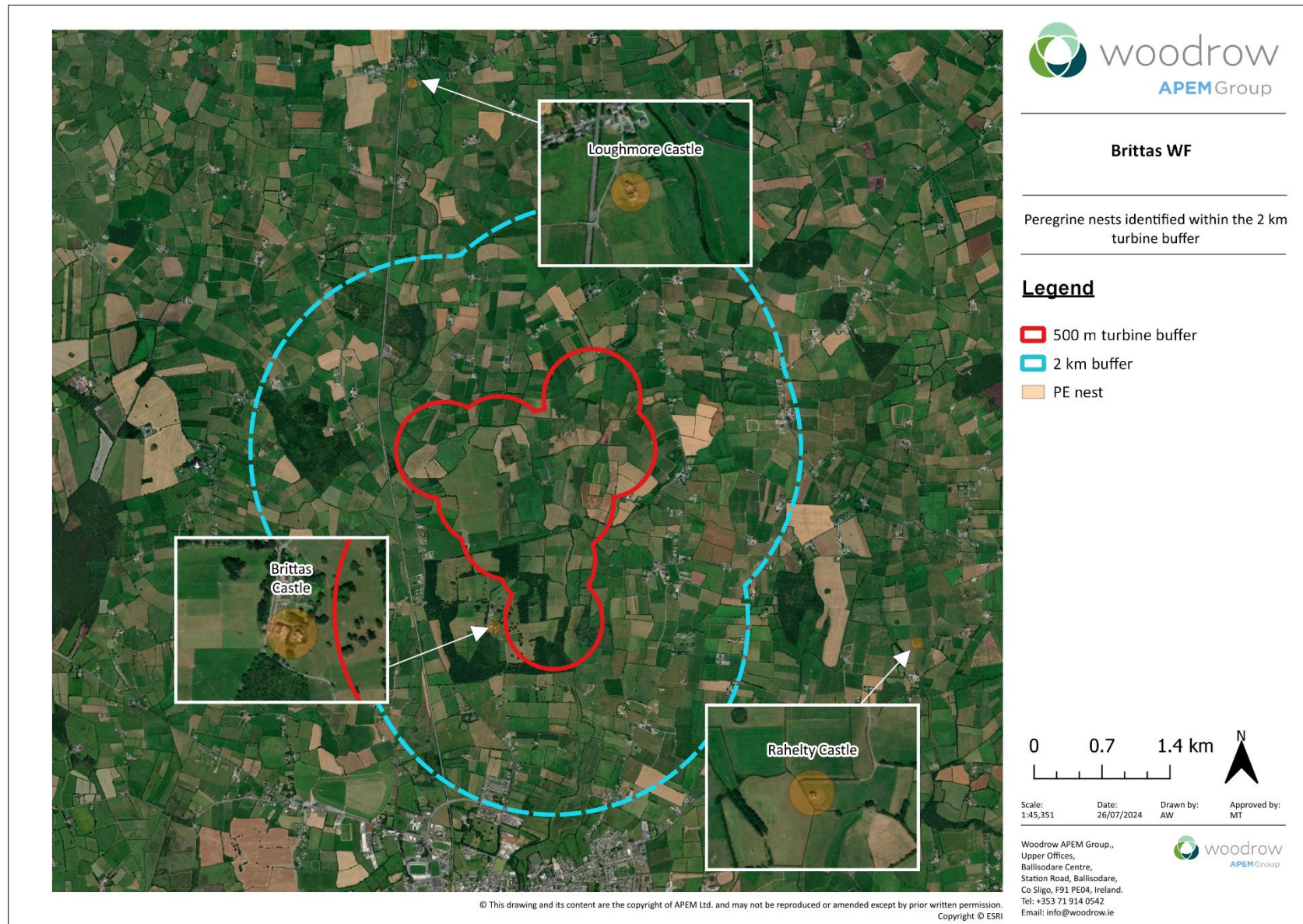


Figure 7G.5: Peregrine nests identified within the 2 km turbine buffer